



**HYDREMA**

**Hydrema**  
**MX G series**

**COMPACT WHEELED EXCAVATORS**

**HYDREMA**  
*Telematics*



# Innovative earthmoving since 1959

Since 1959, Hydrema has developed, manufactured, sold and serviced high-tech construction machines. Efficient, innovative and high-quality machines. Our products distinguish themselves from other products on the market through their technical and physical capabilities. They are very well suited to perform specialized tasks in construction and installation work.

 **HYDREMA**





# The perfect wheeled excavator for the city.

## Stronger, cleaner and quieter than ever before.

The MX G series combines Hydrema's tradition of ultra-compact wheeled excavators with the latest technology, making them quieter, cleaner and stronger than ever before.

The MX14G, MX16G, MX17G, MX18G and MXG20 are strong, compact machines with top-class breakout force, engine power and digging performance. The perfect match for construction sites in the city.

Equipped with the latest Cummins Stage V engine with 175 hp they are packed with power while also meeting the latest emission requirements.

The exhaust gas is treated in one compact unit, consisting of two catalyts and a diesel particulate filter (DPF).

Furthermore the engine is able to run on 100% bio diesel fuels that meet the EN 15940 specification, such as hydrotreated vegetable oil (HVO).

The ROPS-approved cab is among the biggest on the market. Together with its low noise level at only 68dB(A), high comfort and simple controls, the operator has an excellent environment to focus on the tasks at hand.

Learn more about the MX G series, its features, lifting capacities and more in this brochure.



### ADVANTAGES

The short slew radius allows for work in confined spaces, such as narrow streets, busy roads, and other areas with limited space.

Strong, compact machines with top-class breakout force, engine power and digging performance.

Great view and high comfort in the biggest cab in its class.

Highly customizable to suit your needs.



Most compact in its class



Specialist applications



Strong and effective



Easy service access



Comfortable solutions



Big cab - excellent view



Control at your fingertips



High quality





**Swing circle**

From 10'10"

**Ultra-short rear end**

From 5'1"

SHORTEST TAIL SWING IN ITS CLASS. FROM:

# 61 inches

**The MX G series is an ultra-compact wheeled excavator - a perfect match for work in cities, on roads and other areas where space is limited.**

**The short tail swing allows you to work in places other machines cannot**

The compact uppercarriage offers a very short tail swing radius and is extremely compact compared to other machines in the same weight class.

Additionally, the unique excavator arm geometry means the front slew radius is short. Though short and compact, the excavator is still among the best on the market, when it comes to its reach, striking height and digging depth, which underscores the versatility and usability of the ma-

chine, as it is able to work both very close to and far away from the machine.

This allows you to work in locations with little to no room, such as close to buildings in cities or within the boundaries of a traffic lane, during roadworks.

**Feel comfort while driving**

The MX wheeled excavator series are popular as compact city excavators because they drive efficiently between workplaces.

With speeds of 21/23 mph, depending on the model, the excavators can move quickly

between sites. The increased engine power and torque really come into their own when driving on roads or in hilly terrain.

The electronically regulated drive motor has an automatic retarder. Together with a new, updated power regulation and cruise control, it ensures optimal performance and comfort while driving.

For added comfort, the optional boom suspension minimizes bounce during travel.





## CITY EXCAVATOR:

# The hydraulics gives excellent performance.

## High performance machines with extensive breakout force, engine power and lifting capacity.

### Immensely powerful

The MX G-series is packed with power, and if you take a closer look at its data and lifting charts, you realize that it is one of the most competitive machines in terms of performance on the market.

Individual optimized excavator arm for each model works with high speed and breakout force provides a very productive machine despite its compact size. At the same time, the lifting capacity is among the best for wheeled excavators.

The powerful 175 hp Cummins Stage V engine provides plenty of power for digging. Max torque is 780 Nm (575 ft lb), 15 percent more than the previous generation.

This means the excavator has 165 hp available at 1500 rpm so most work can be carried out with the lowest possible fuel consumption and noise levels.

### High hydraulic power

A dual-circuit electronically-controlled hydraulic system effectively adjusts the hydraulic power for any task.

The combination of high engine power and the industry's highest hydraulic output ensures flow of up to 107 gpm.

The large amount of available power allows the MXG series to perform demanding work functions at lower revs.

### Re-engineered slew function

Hydrema's wheeled excavators have a separate hydrostatic circuit with a separate hydraulic pump for the slew function.

This makes it possible to regenerate the slew brake energy and keep the slew function completely independent of other excavator functions.

Combined with a hydraulic-electronic Mode-Control and ECO mode, this ensures greater efficiency, a better fuel economy and smooth, predictable movements when using several functions simultaneously.

The re-engineered slew function provides smoother movements of the uppercarriage. Angle sensors have been added and new software continuously adapts the hydraulics and slew braking function for all loads.

The machine is equipped with hose burst valves on all load-bearing cylinders on the excavator arm and stabilizers to increase safety during lifting jobs.



Great stability and great hydraulics. Definitely a machine to consider when buying a new one."





**EXCELLENT WORKING CONDITIONS:**

# Spacious cab with first-class comfort.

**Working environment and visibility**

The spacious ROPS-approved cab is quiet ensuring a comfortable working environment.

The view from the operator's seat can be supplemented by up to two external cameras that stream to the display which is located on the right-hand front cab pillar.

The different camera angles can be combined to improve both clarity and safety by means of an optional 360-degree camera system. The view this affords is of particular benefit when working in confined spaces or in busy or densely populated areas.

A fully opening hinged front window enables unimpaired communication to and from the cab.

**Comfort**

The cab is equipped with an adjustable, air-cushioned seat with further options of ventilation and automatic weight adjustment.

The ergonomic joysticks are available in several different versions, ensuring that control is always at the operator's fingertips. The joysticks are built into the armrests, which can be individually adjusted for height, depth and angle in order to achieve the optimum working position for the operator.

The machine is equipped with strategically positioned keypad panels operating through a CAN-BUS control system for simple intelligent operation.

The noise level in the cab is 68 dB(A) making it a healthy and comfortable environment for the operator to work in.

The effective air-conditioning system ensures the correct temperature and excellent air quality.

An integrated 3.7 gal cool box is available as an optional extra.

**Operation**

The clear 10" touch display enables the operator to finely adjust the machine's many functions quickly and easily. This can be done either by using the touch screen, or the integrated display controller which is ergonomically located in the armrest.

Along with the straightforward design of the main screen, the camera is also integrated. This means that the operator receives all the necessary data combined into a single user interface, which results in easy operation and an enhanced overview.

The innovative "Quick menu" enables the operator to organize the most frequently used functions in a special quick selection menu, thus making operation of the machine even more efficient.

The joystick's roller functions can be individually adjusted in both direction and sensitivity, Additionally the functions can be transferred between the two joysticks. This always ensures a high degree of flexibility and optimum operation.





# Intelligent service and maintenance.

## Maximize uptime with professional service and Hydrema Telematics.

### Easy access to service

The MX is designed for quick and easy service. The hood opens simply via push button activation to allow access to the engine, filters, radiator and other service points.

Most components can be easily reached while your feet remain securely planted on the ground.

All drainage points are equipped with valves that enable drainage to take place in an eco-friendly manner without spillage.

An optional reversible cooling fan can help keep the radiator clean.

All notifications concerning service and daily maintenance appear on the large in cab display.

### Hydrema Telematics

All Hydrema machines come as standard with the advanced Hydrema Telematics system.

This collects important operational and machine data, thus enabling you to plan

and manage your machines in a completely new way saving both time and money.

You can see all the machine data on your mobile phone, tablet or PC, and optimize operations based on this information.

Should you need to know the fuel consumption or CO<sub>2</sub> emission for a specific job, you can find this in the Telematics report. Most of the data is displayed on clear and simple graphs.

### Telematics and uptime

In the event of any stoppages, our service department will often be able to remotely identify the fault via the Telematics portal and help you get the machine up and running again.

Software updates can be performed seamlessly using Hydrema's advanced "Over The Air" update system.

High uptime is a prerequisite for efficient operation.

## BENEFITS OF HYDREMA Telematics

Easy access to all machine data to manage efficiency and consumption.

Simple reports that contain all the important data, such as machine hours and location.

Information about the current job, such as fuel consumption and CO<sub>2</sub> emission.

Dynamic location tracking with Geoleash.

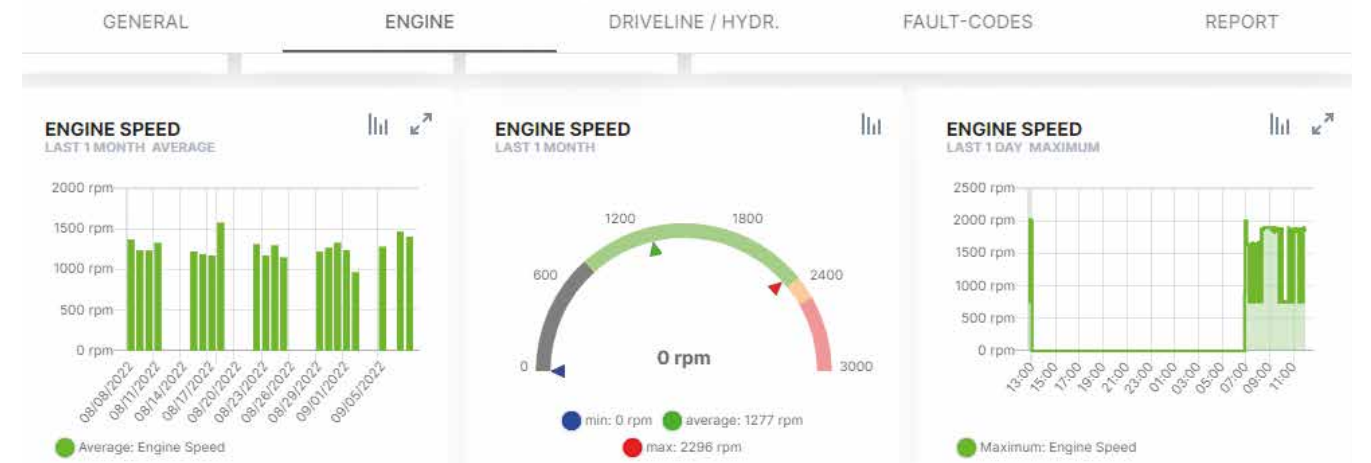
Anti-theft protection with notification if the machine is moved.

Alarms in the event of stoppages.

Management of service and mainten. with deadlines and if desired, alarms.

Quick and effective remedying of faults by means of contact to Hydrema Service.

Rapid "over the air" update of software.







## CONFIGURATIONS:

# Build the machine of your dreams.

**In addition to the comprehensive standard equipment, you can choose from a wide range of optional equipment. E.g:**

The MX G series has modular undercarriage. A dozer blade, stabilizers and tiltable BM hitch can be mounted to suit your needs.

### Tires

A wide range of tires are available to tailor the machine to different surfaces.

### Towing Hitch

A KS80 towing hitch for trailers are available, capable of towing heavy loads up to 17600 lb. This allows you to carry tools and materials with you.

In addition to electric and hydraulic lines, a trailer brake system is available for maximum safety.

### Light it up

Extensive LED light packages are available, where up to 11 powerful LED work lights can change night into day.

### Avoid daily greasing

The automatic lubrication system allocates the amount of grease the machine needs. The intelligent system adjusts the amount of grease needed to suit the working conditions.

### Engcon improve flexibility

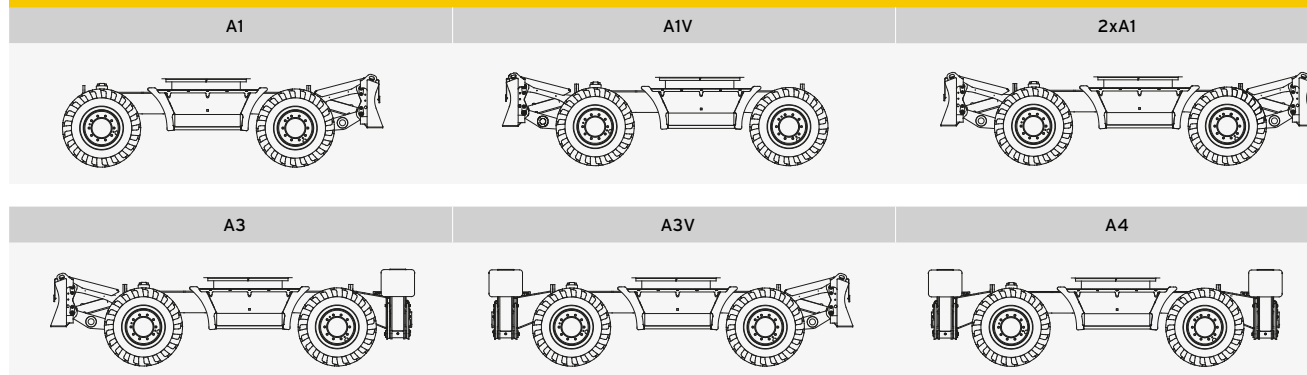
Make your excavator even more versatile by adding an Engcon tiltrotator with a fully automatic quick hitch system with ECO-oil.

This means that the hydraulic tools can be connected or disconnected without the operator having to leave the cab.

### Customized colours

As an option, Hydrema offers to paint your new machine in customized colours to match your preferences, ensuring your excavator will stand out and make a unique impression.

## UNDERCARRIAGE VARIANTS





## PERFORMANCE & TECHNOLOGY

# Years of experience combined with intelligent technology.



### Excavator

Compact excavator with two-piece boom for all models. Built from high tensile steel with closed profiles. 6'7", 8'2" and 9'10" dipper available. Hydraulic quick hitch and tilt rotator as options.

### Undercarriage

6 possible undercarriage variants:

Rear dozer blade (A1)  
 Front dozer blade (A1V)  
 Front/rear dozer blade (2xA1)  
 Front dozer bl./rear stabilizers (A3)  
 Front stabilizers/rear dozer bl. (A3V)  
 Front/rear stabilizers (A4)

All options are illustrated on page 15.

### Engine

Cummins B 4.5L Stage V engine with DOC, DPF and SCR catalyst with Ad-Blue additive. 16-valve Common-Rail Turbo-diesel with intercooler. Max. 175 hp (129 kW) at 2200 rpm. Max. torque: 780 Nm (575 lb ft) at 1500 rpm. 165 hp (121 kW) is achieved already at 1500 rpm. Fuel tank 74 gal. Ad Blue tank: 8.3 gal.

### Hydraulic system

Dual-circuit system with Load Sensing and high pressure hydrostatic slew system and separate pumps. Electronic power control of the pump for working hydraulics. Mode control for precision work and ECO mode for fuel economy. Up to 3 hydraulic circuits for implements (2 as standard), adjustable from the cabin. Circuit 3 with priority of oil flow. Adjustable pressure and oil quantity for up to 10 tools.

#### Oil quantity:

Pump 1: Working hydraulics	84 gpm
Pump 2: Slew hydraulics	23 gpm

#### System pressure:

Working hydraulics	5,076 PSI
Slew hydraulics	5,729 PSI

Hydraulic circuit 1, ZV1:	8-53 gpm
---------------------------	----------

Hydraulic circuit 2, ZV2:	4-26 gpm
---------------------------	----------

Hydraulic circuit 3, ZV3:	13-53 gpm
---------------------------	-----------

### Steering

Hydraulic steering with emergency steering. Joystick steering (max. 12 mph) as an option.

### Axles

ZF axles with 45% limited-slip differential lock and planetary reduction in the hubs. Brakes in all hubs for optimal excavation brake. Front axle with center bolt and pendulum lock. Oscillating angle: +/- 8°

### Driving hydraulics & Transmission

Constant 4 wheel hydrostatic drive. Electronically controlled drive motor with automatic retarder. ZF 2-speed soft shift powershift transmission with electro-hydraulic gearshift system. Choose between manual or automatic gearshift.

	MX14G	MX16G	MX17G	MX18G	MX20G
Road gear (mph)	23	23	21	21	21
Off-road gear (mph)	0-6	0-6	0-6	0-6	0-6
Creep gear (mph)	1.2	1.2	2.2	2.2	2.2
Max. traction (lbf)	23,372/(24945)	24,945	24,945	24,945	24,945

Speeds are specified for a standard machine with dozer blade and standard tyres fitted. If the machine is carrying extra weight such as stabilizers, tilt rotators and heavy appliances or other equipment, the maximum speed may be lower

### Electrical system

Standard 24V system with 70 Amp. alternator. Batteries: 2x 12V, 100Ah. Robust and protected wiring. Only waterproof plugs are used on the exterior, which guarantees long life and trouble-free functionality. All fuses and relays are located beside the cab and can easily be inspected via the service hatch. The machine is equipped with electronic emergency operation in case of a breakdown in the electronic units.

### Automatic circuit breaker

The automatic master switch shuts off all electrical systems when the operator turns off the machine and vacates the cab. Sensors in the doors reactivate the system when the operator returns. The timer and shutdown procedure are controlled via the instrument panel. An emergency master switch is also located in the cab as a safety measure.

### Operation

Joysticks with 4 proportional servo functions, 1 proportional roller and 4 buttons. Optional hydraulics controlled by rollers. Two-piece boom, dozerblade and stabilizers operated with foot pedals independently of other features. Pressure and oil volume for optional hydraulics can be controlled electronically from the instrument panel. Joysticks with up to 3 rollers and 7 push buttons as option. Multi-adjustable armrests.

### Slew system

Hydrostatic high pressure slewing system. Brake energy from slew partially regenerated to the diesel engine. The mechanical slew brake is an integrated planetary gear. Smooth slew system with angle sensors.

Slewing speed	10.8 rpm
---------------	----------

Slewing torque	36,900 lb ft
----------------	--------------

### Brakes

Dual circuit system with oil immersed brakes on all wheels. Parking brake integrated in transmission. Automatic excavation brake is standard.

### Cab

Spacious ROPS cab with sliding window in the door, 2-part front window with sliding top, removable bottom and skylight. Adjustable steering column and armrests. Air conditioning with 7 adjustable air nozzles. Air suspended seat. Large 10" display, simple to operate via touch or the display controller in the armrest. Large rear-view mirrors with electronic adjustment. Rear view camera integrated into the display. Storage space under and behind the seat. Automatic entry and exit light.

### Noise level

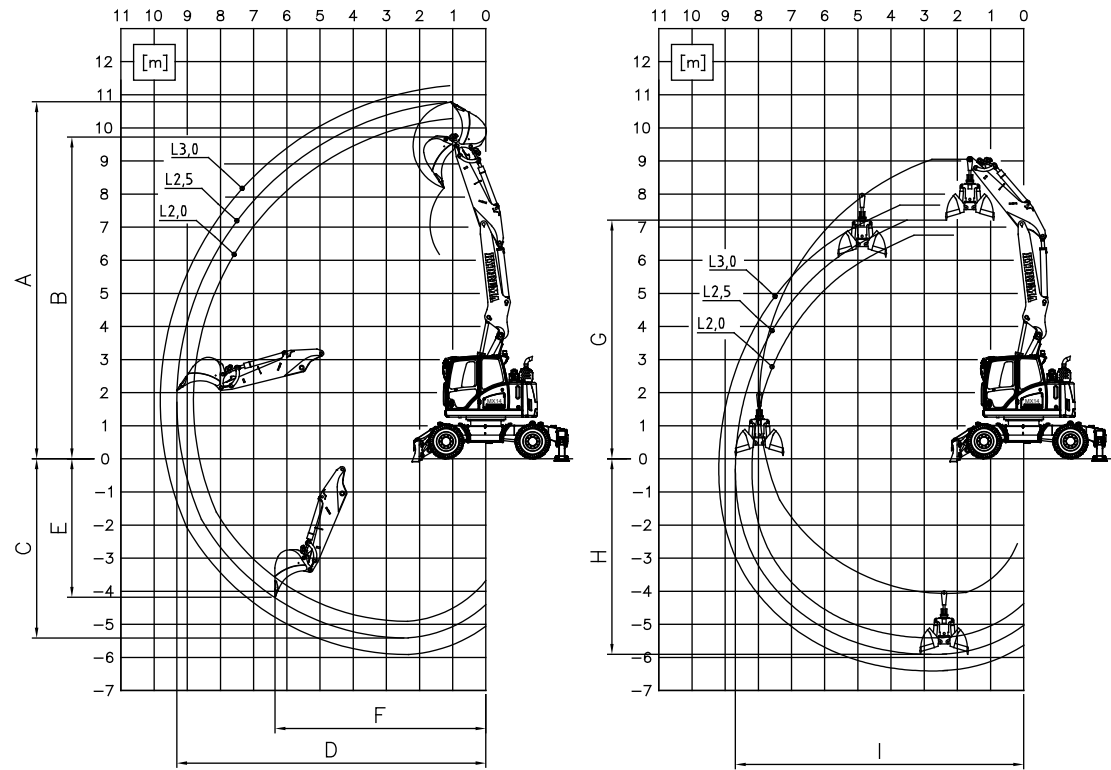
**Cab:**  
68 dB

**Exterior:**  
102 dB





# Working area and breakout force.

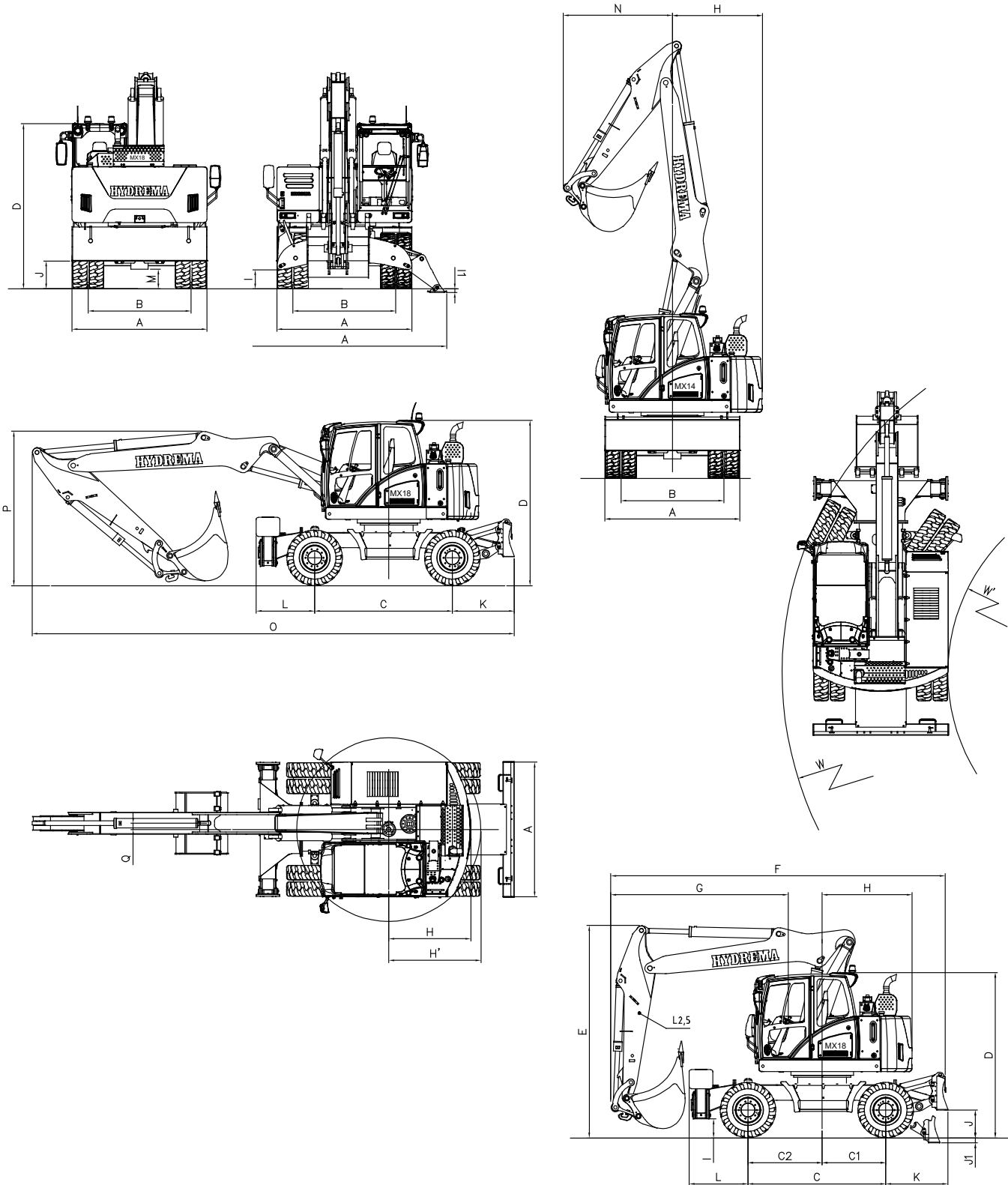


		MX14G			MX16G			MX17G			MX18G			MX20G				
	Length of dipper	ft	in	6'7"	8'2"	9'10"	6'7"	8'2"	9'10"	6'7"	8'2"	9'10"	6'7"	8'2"	9'10"	6'7"	8'2"	9'10"
<b>A</b>	Strike height	ft	in	32'1"	33'8"	-	33'9"	35'4"	36'12"	33'9"	35'4"	36'12"	35'0"	36'8"	38'3"	35'0"	36'8"	38'3"
<b>B</b>	Lifting height	ft	in	28'8"	30'2"	-	31'3"	31'11"	33'6"	31'3"	31'11"	33'6"	31'6"	33'2"	34'9"	31'6"	33'2"	34'9"
<b>C</b>	Digging depth	ft	in	14'6"	16'1"	-	16'1"	17'9"	19'5"	16'1"	17'9"	19'5"	17'6"	19'20"	20'9"	17'6"	19'2"	20'9"
<b>D</b>	Range	ft	in	27'3"	28'10"	-	28'11"	30'7"	32'3"	28'11"	30'7"	32'3"	30'3"	31'11"	33'6"	30'3"	31'11"	33'6"
<b>E</b>	Vertical digging depth	ft	in	10'6"	12'2"	-	12'2"	13'9"	15'3"	12'2"	13'9"	15'3"	13'3"	14'9"	16'4"	13'3"	14'9"	16'4"
<b>F</b>	Horizontal digging depth	ft	in	15'8"	19'11"	-	20'3"	20'10"	19'8"	20'3"	20'10"	19'8"	21'2"	21'10"	22'5"	21'2"	21'10"	22'5"
<b>G</b>	Lifting height	ft	in	20'4"	22'0"	-	22'0"	23'8"	25'4"	22'0"	23'8"	25'4"	23'4"	24'12"	26'7"	23'4"	24'12"	26'7"
<b>H</b>	Working depth	ft	in	17'5"	19'1"	-	17'9"	19'5"	21'0"	17'9"	19'5"	21'0"	19'1"	20'9"	22'5"	19'1"	20'9"	22'5"
<b>I</b>	Range	ft	in	25'1"	26'8"	-	26'10"	28'6"	30'2"	26'10"	28'6"	30'2"	28'11"	29'9"	31'5"	28'11"	29'9"	31'5"
	Bucket rotation angle	°		175	175	-	175	175	175	175	175	175	175	175	175	175	175	175
<b>Breakout force, directly mounted bucket</b>																		
	Breakout force, bucket (ISO)	lbf		23821			23821			28316			31013			31013		
	Digging force (ISO)	lbf		18428	15731	-	20900	18428	16181	20900	18428	16181	24945	21799	19327	24945	21799	19327
<b>Max. recommended bucket size</b>																		
	Standard bucket	yd <sup>3</sup>		1.05			1.18			1.31			1.31			1.31		
<b>Max. recommended bucket size with rotor tilt</b>																		
	Standard bucket	yd <sup>3</sup>		0,78			0,92			1,05			1,05			1,05		

The working area is specified with Hydrema standard bucket and 70.9 in grab height.



# Dimensions and weight.



DIMENSIONS		MX14G	MX16G	MX17G	MX18G	MX20G
ft in						
<b>A</b>	Width across:					
	Blade	8'4"	8'4"	8'4"	8'4"	8'4"
	Stabilizers, lowered	12'8"	12'8"	12'8"	12'8"	12'8"
	Tires 10.00-20	8'4"	8'4"	8'4"	8'4"	8'4"
	Tires 600/40-R22.5	8'3"	8'3"	8'3"	8'3"	8'3"
	Tires 650/45-R22.5	8'5"	8'5"	8'5"	8'5"	8'5"
	Tires 710/40-R22,5	8'11"	8'11"	8'11"	8'11"	8'11"
<b>B</b>	Track width with standard tires	6'4"	6'4"	6'4"	6'4"	6'4"
<b>C</b>	Wheelbase	8'6"	8'6"	8'6"	8'6"	8'6"
<b>C1</b>	Distance, pivot center to rear axle	3'11"	3'11"	3'11"	3'11"	3'11"
<b>C2</b>	Distance, pivot center to front axle	4'7"	4'7"	4'7"	4'7"	4'7"
<b>D</b>	Clearance height, cab	10'3"	10'3"	10'3"	10'3"	10'3"
<b>E</b>	Transport height	13'1"	13'1"	13'1"	13'1"	13'1"
<b>F</b>	Length, road transport	21'4"	21'4"	21'4"	21'4"	21'4"
<b>G</b>	Overhang, front (with 8'2" stick)	10'11"	10'11"	10'11"	10'11"	10'11"
<b>H</b>	Rear distance, pivot center - counterweight	5'1"	5'5"	5'7"	5'7"	5'7"
<b>H1</b>	Swing radius, rear	5'8"	5'11"	6'0"	6'0"	6'0"
<b>I</b>	Ground clearance, stabilizer	1'2"	1'2"	1'2"	1'2"	1'2"
<b>I1</b>	Ground clearance, wheels, lower stabilizer	0'2"	0'2"	0'2"	0'2"	0'2"
<b>J</b>	Ground clearance, blade	1'8"	1'8"	1'8"	1'8"	1'8"
<b>J1</b>	Ground clearance, wheels, lower blade	0'3"	0'3"	0'3"	0'3"	0'3"
<b>K</b>	Overhang, blade	3'10"	3'10"	3'10"	3'10"	3'10"
<b>L</b>	Overhang, stabilizer	3'8"	3'8"	3'8"	3'8"	3'8"
<b>M</b>	Ground clearance, axles	1'2"	1'2"	1'2"	1'2"	1'2"
<b>N</b>	Swing radius, front					
	with 6'7" dipper	5'5"	5'5"	5'5"	5'8"	5'8"
	with 8'2" dipper	6'5"	6'6"	6'6"	6'9"	6'9"
	with 9'10" dipper	-	7'7"	7'7"	7'11"	7'11"
<b>O</b>	Total length during transport, 8'2" dipper	26'7"	28'7"	28'7"	29'11"	29'11"
<b>P</b>	Height of two-piece boom during shipping, 8'2" dipper	9'10"	9'7"	9'7"	9'7"	9'7"
<b>Q</b>	Center shift, two-piece boom	0'5"	0'5"	0'5"	0'5"	0'5"
<b>W</b>	Outside turn radius	21'12"	21'12"	21'12"	21'12"	21'12"
<b>W1</b>	Inside turn radius	11'10"	11'10"	11'10"	11'10"	11'10"

Dimensions with standard tires 10.00-20.

MACHINE WEIGHT		MX14G	MX16G	MX17G	MX18G	MX20G
lb						
<b>Chassis</b>						
A1	Blade	35,274	38,140	40,344	41,226	-
A3	Blade + stabilizer	37,919	41,006	42,990	44,312	44,312
2XA1	Front and rear blade	37,699	40,785	42,769	44,092	-
A4	Front and rear stabilizer	38,140	41,226	43,210	44,533	-

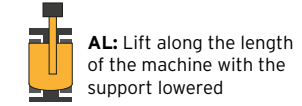
Weight stated with 441 lb quick hitch and 882 lb bucket



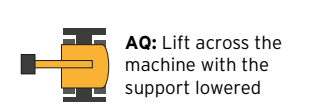
# Lifting capacity.



**F:** Lift 360° with support raised



**AL:** Lift along the length of the machine with the support lowered



**AQ:** Lift across the machine with the support lowered

**MX14G : MAX LIFTING CAPACITY IN LB WITH CHASSIS A1, DIPPER 8'2". WEIGHT QUICK HITCH 441 LB. ISO 10567\***

Reach in feet																			
H	10			13			16			19			22			Max.			
	AQ	F	AL	AQ	F	AL	AQ	F	AL	AQ	F	AL	AQ	F	AL	AQ	F	AL	
24	16.403*	16.403*	16.403*	14.107*	12.794	14.107*													
16	12.794*	12.794*	12.794*	14.435*	13.450	14.435*	10.498	9.186	14.763*	7.545	6.561	12.794*							
12	16.731*	16.731*	16.731*	14.435	12.138	17.715*	9.842	8.530	17.715*	7.217	6.233	16.731*	5.577	4.593	13.122*				
8	19.027	15.747	40.679*	12.138	10.170	31.822*	8.858	7.545	25.261*	6.561	5.577	19.684	5.249	4.265	15.091	4.265	3.609	8.202*	
0	16.731	13.450	43.632*	10.826	9.186	33.462*	7.873	6.561	26.245	6.233	5.249	19.027	4.921	3.937	14.763				
-4	17.059	13.779	46.913*	10.826	8.858	34.118*	7.873	6.561	25.917	6.233	4.921	19.027							
-12	17.715	14.435	46.256*	11.54	9.186	32.150*	8.202	6.889	22.308*										

**MX16G : MAX LIFTING CAPACITY IN LB WITH CHASSIS A1, DIPPER 8'2". WEIGHT QUICK HITCH 441 LB. ISO 10567\***

Reach in feet																			
H	10			13			16			19			22			Max.			
	AQ	F	AL	AQ	F	AL	AQ	F	AL	AQ	F	AL	AQ	F	AL	AQ	F	AL	
24	11.000*	11.000*	11.000*	12.000*	10.600	12.000*	8.600	7.500	12.000*	6.300	5.400	10.800*							
16	10.400*	10.400*	10.400*	11.500	10.000	12.200*	8.200	7.100	12.800*	6.200	5.400	12.800*	4.800	4.100	11.500*				
12	17.200	14.700	20.500*	10.600	9.100	19.300*	7.700	6.600	16.200*	5.900	5.100	14.300*	4.600	4.000	12.500				
8	16.000	13.500	23.900*	9.800	8.300	23.700*	7.100	6.100	18.600*	5.500	4.700	15.400*	4.400	3.700	12.200	3.000	2.500	8.100*	
0	12.900	10.600	31.700*	8.400	7.000	27.000*	6.300	5.300	20.200	5.000	4.200	14.900	4.000	3.400	11.800				
-4	12.400	10.200	36.100*	8.300	6.900	27.200*	6.200	5.100	20.000	4.900	4.100	14.800	4.000	3.300	11.700				
-12	13.300	11.000	35.700*	8.800	7.400	25.400*	6.600	5.500	18.400*										

**MX14G : MAX LIFTING CAPACITY IN LB WITH CHASSIS 2 X A1, DIPPER 8'2". WEIGHT QUICK HITCH 441 LB. ISO 10567\***

Reach in feet																			
H	10			13			16			19			22			Max.			
	AQ	F	AL	AQ	F	AL	AQ	F	AL	AQ	F	AL	AQ	F	AL	AQ	F	AL	
24	22.308*	22.308*	22.308*	14.107*	13.450	14.107*													
16	12.794*	12.794*	12.794*	14.435*	14.107	14.435*	13.779	9.514	14.763*	10.170	6.889	12.794*							
12	16.731*	16.731*	16.731*	17.715*	13.122	17.715*	13.122	9.186	17.715*	9.842	6.561	16.731*	7.545	4.921	13.122*				
8	26.901	16.731	40.679*	17.059	11.54	31.822*	12.138	7.873	25.261*	9.186	5.905	20.668*	7.217	4.593	17.387	5.905	3.937	8.202*	
0	24.605	14.763	43.632*	15.419	9.842	33.462*	11.54	7.217	26.245*	8.530	5.577	21.324*	5.889	4.265	17.059				
-4	24.605	14.763	46.913*	15.419	9.514	34.118*	11.54	6.889	26.245*	8.530	5.577	19.356*							
-12	25.261	15.419	46.256*	15.747	9.842	32.150*	11.482	7.217	22.308*										

**MX16G : MAX LIFTING CAPACITY IN LB WITH CHASSIS 2XA1, DIPPER 8'2". WEIGHT QUICK HITCH 441 LB. ISO 10567\***

Reach in feet																			
H	10			13			16			19			22			Max.			
	AQ	F	AL	AQ	F	AL	AQ	F	AL	AQ	F	AL	AQ	F	AL	AQ	F	AL	
24	11.000*	11.000*	11.000*	12.000*	11.100	12.000*	11.000	7.800	12.000*	8.200	5.700	10.800*							
16	10.400*	10.400*	10.400*	12.200*	10.500	12.200*	10.700	7.500	12.800*	8.100	5.700	12.800*	6.300	4.400	11.500*				
12	20.500*	15.400	20.500*	14.100	9.600	19.300*	10.200	7.000	16.200*	7.800	5.400	14.300*	6.200	4.200	12.800*				
8	21.700	14.200	23.900*	13.200	8.800	23.700*	9.500	6.400	18.600*	7.400	5.000	15.400*	5.900	4.000	13.700*	4.200	2.700	8.100*	
0	18.300	11.300	31.700*	11.700	7.400	27.000*	8.700	5.600	21.500*	6.800	4.500	16.900	5.500	3.600	13.300				
-4	17.800	10.800	36.100*	11.600	7.300	27.200*	8.500	5.500	21.600*	6.700	4.400	16.700	5.500	3.600	13.200				
-12	18.800	11.700	35.700*	12.200	7.900	25.400*	9.000	5.900	18.400*										

**MX14G : MAX LIFTING CAPACITY IN LB WITH CHASSIS A3, DIPPER 8'2". WEIGHT QUICK HITCH 441 LB. ISO 10567\***

Reach in feet																			
H	10			13			16			19			22			Max.			
	AQ	F	AL	AQ	F	AL	AQ	F	AL	AQ	F	AL	AQ	F	AL	AQ	F	AL	
24	16.403*	16.403*	16.403*	14.435*	13.779*	14.107*													
16	12.794*	12.794*	12.794*	14.435*	14.107	14.435*	14.763*	9.842	14.763*	12.794*	6.889	12.794*							
12	16.731*	16.731*	16.731*	17.715*	13.122	17.715*	17.715*	9.186	17.715*	13.450	6.889	16.731*	10.170	4.921	13.122*				
8	40.679*	17.059	40.679*	23.948	11.54	31.822*	16.731	8.202	25.261*	12.466	6.233	20.340	9.842	4.921	15.747	8.202*	3.937	8.202*	
0	37.727	14.763	43.632*	22.308	9.842	33.462*	15.747	7.217	26.245*	12.138	5.577	19.684	9.514	4.593	15.419				
-4	38.055	15.091	46.913*	22.308	9.842	34.118*	15.747	7.217	26.245*	11.810	5.577	19.356*							
-12	38.711	15.747	46.256*	22.636	10.170	32.150*	16.075	7.545	22.308*										

**MX16G : MAX LIFTING CAPACITY IN LB WITH CHASSIS A3, DIPPER 8'2". WEIGHT QUICK HITCH 441 LB. ISO 10567\***

Reach in feet																			
H	10			13			16			19			22			Max.			
	AQ	F	AL	AQ	F	AL	AQ	F	AL	AQ	F	AL	AQ	F	AL	AQ	F	AL	
24	11.000*	11.000*	11.000*	12.000*	11.200	12.000*	12.000*	7.900	12.000*	10.800*	5.800	10.800*							
16	10.400*	10.400*	10.400*	12.200*	10.600	12.200*	12.800*	7.600	12.800*	10.800	5.700	12.800*	8.400	4.400	11.500*				
12	20.500*	15.500	20.500*	19.300*	9.700	19.300*	13.700	7.100	16.200*	10.400	5.400	14.300*	8.300	4.300	12.800*				
8	23.900*	14.400	23.900*	18.400	8.900	23.700*	13.100	6.500	18.600*	10.000	5.100	15.400*	8.000	4.100	12.600	5.700	2.800	8.100*	
0	27.600	11.400	31.700*	16.800	7.500	27.000*	12.100	5.700	20.300	9.400	4.500	15.300	7.600	3.700	12.100				
-4	26.900	11.000	36.100*	16.600	7.500	27.200*	12.000	5.600	20.200	9.300	4.400	15.100	7.500	3.600	12.000				
-12	28.200	11.900	35.700*	17.300	8.000	25.400*	12.400	6.000	18.400*										

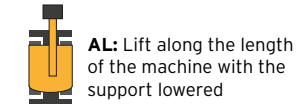
**MX14G : MAX LIFTING CAPACITY IN LB WITH CHASSIS A4, DIPPER 8'2". WEIGHT QUICK HITCH 441 LB. ISO 10567\***

Reach in feet																			
H	10			13			16			19			22			Max.			
	AQ	F	AL	AQ	F	AL	AQ	F	AL	AQ	F	AL	AQ	F	AL	AQ	F	AL	
24	16.403*	16.403*	16.403*	14.107*	13.779*	14.107*													
16	12.794*	12.794*	12.794*	14.435*	14.435	14.435*	13.763*	9.842	13.763*	12.794*	7.217	12.794*							
12	16.731*	16.731*	16.731*	17.715*	13.450	17.715*	17.715*	9.156	17.715*	16.731*	6.889	16.731*	13.122*	5.249	13.122*				
8	40.679*	17.387	40.679*	31.822*	11.482	31.822*	21.980	8.202	25.261*	16.403	6.233	20.668*	12.794	4.921	16.403	8.202*	3.937	8.202*	
0	43.612*	15.091	43.612*	30.510	10.170	33.462*	20.668	7.545	26.245*	15.747	5.577	20.340	12.466	4.593	16.075				
-4	46.913*	15.419	46.913*	30.182	9.842	34.118*	20.668	7.217	26.245*	15.419	5.577	19.356*							
-12	46.256*	15.747	46.256*	30.510	10.170	32.150*	20.996	7.545	22.308*										

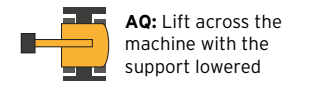




**F:** Lift 360° with support raised



**AL:** Lift along the length of the machine with the support lowered



**AQ:** Lift across the machine with the support lowered

**MX17G : MAX LIFTING CAPACITY IN LB WITH CHASSIS A1, DIPPER 8'2". WEIGHT QUICK HITCH 441 LB. ISO 10567\***

H	Reach in feet																		
	10			13			16			19			22			Max.			
	AQ	F	AL	AQ	F	AL	AQ	F	AL	AQ	F	AL	AQ	F	AL	AQ	F	AL	
24	11.000*	11.000*	11.000*	12.000*	11.900	12.000*	9.700	8.500	12.000*	7.200	6.300	10.800*							
16	10.300*	10.300*	10.300*	12.200*	11.300	12.200*	9.300	8.200	12.800*	7.100	6.200	12.800*	5.500	4.800	11.400*				
12	19.300	16.600	20.400*	12.100	10.400	19.200*	8.800	7.700	16.100*	6.800	5.900	14.300*	5.400	4.600	12.800*				
8	18.100	15.400	23.800*	11.200	9.600	23.700*	8.200	7.100	18.500*	6.400	5.500	15.300*	5.100	4.400	13.600	3.600	3.100	8.100*	
0	15.000	12.500	31.600*	9.800	8.300	26.900*	7.400	6.300	21.400*	5.900	5.000	16.600	4.800	4.100	13.100				
-4	14.500	12.000	36.100*	9.700	8.200	27.100*	7.300	6.100	21.600*	5.700	4.900	16.500	4.700	4.000	13.000				
-12	15.400	12.900	35.600*	10.300	8.700	25.400*	7.700	6.600	18.300*										

**MX17G : MAX LIFTING CAPACITY IN LB WITH CHASSIS 2XA1, DIPPER 8'2". WEIGHT QUICK HITCH 441 LB. ISO 10567\***

H	Reach in feet																		
	10			13			16			19			22			Max.			
	AQ	F	AL	AQ	F	AL	AQ	F	AL	AQ	F	AL	AQ	F	AL	AQ	F	AL	
24	110.00*	11.000*	11.000*	12.000*	12.000*	12.000*	12.000*	8.900	12.000*	9.200	6.600	10.800*							
16	10.300*	10.300*	10.300*	12.200*	11.800	12.200*	11.900	8.500	12.800*	9.100	6.500	12.800*	7.100	5.100	11.400*				
12	20.400*	17.300	20.400*	15.700	10.900	19.200*	11.400	8.000	16.100*	8.800	6.200	14.300*	7.000	4.900	12.800*				
8	23.800*	16.100	23.800*	14.800	10.100	23.700*	10.800	7.400	18.500*	8.400	5.800	15.300*	6.700	4.700	13.700*	4.800	3.200	8.100*	
0	20.800	13.200	31.600*	13.300	8.700	26.900*	9.900	6.600	21.400*	7.800	5.300	17.800*	6.400	4.300	14.600				
-4	20.200	12.700	36.100*	13.200	8.700	27.100*	9.800	6.500	21.600*	7.700	5.200	17.900*	6.300	4.300	14.600				
-12	21.300	13.600	35.600*	13.800	9.200	25.400*	10.200	6.900	18.300*										

**MX17G : MAX LIFTING CAPACITY IN LB WITH CHASSIS A3, DIPPER 8'2". WEIGHT QUICK HITCH 441 LB. ISO 10567\***

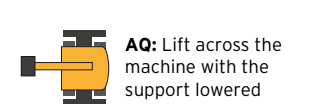
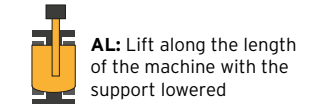
H	Reach in feet																		
	10			13			16			19			22			Max.			
	AQ	F	AL	AQ	F	AL	AQ	F	AL	AQ	F	AL	AQ	F	AL	AQ	F	AL	
24	11.000*	11.000*	11.000*	12.000*	12.000*	12.000*	12.000*	8.900	12.000*	10.800*	6.600	10.800*							
16	10.300*	10.300*	10.300*	12.200*	11.900	12.200*	12.800*	8.600	12.800*	11.900	6.600	12.800*	9.400	5.100	11.400*				
12	20.400*	17.400	20.400*	19.200*	11.000	19.200*	15.200	8.100	16.100*	11.600	6.300	14.300*	9.200	5.000	12.800*				
8	23.800*	16.300	23.800*	20.500	10.200	23.700*	14.500	7.500	18.500*	11.200	5.900	15.300*	9.000	4.700	13.700*	6.400	3.300	8.100*	
0	30.800	13.300	31.600*	18.800	8.900	26.900*	13.600	6.700	21.400*	10.600	5.300	16.800	8.600	4.400	13.400				
-4	30.200	12.900	36.100*	18.700	8.800	27.100*	13.400	6.600	21.600*	10.400	5.200	16.700	8.500	4.300	13.300				
-12	31.400	13.800	35.600*	19.300	9.300	25.400*	13.900	7.000	18.300*										

**MX17G : MAX LIFTING CAPACITY IN LB WITH CHASSIS A4, DIPPER 8'2". WEIGHT QUICK HITCH 441 LB. ISO 10567\***

H	Reach in feet																		
	10			13			16			19			22			Max.			
	AQ	F	AL	AQ	F	AL	AQ	F	AL	AQ	F	AL	AQ	F	AL	AQ	F	AL	
24	11.000*	11.000*	11.000*	12.000*	12.000*	12.000*	12.000*	9.000	12.000*	10.800*	6.700	10.800*							
16	10.300*	10.300*	10.300*	12.200*	12.000	12.200*	12.800*	8.700	12.800*	12.800*	6.600	12.800*	11.400*	5.200	11.400*				
12	20.400*	17.600	20.400*	19.200*	11.100	19.200*	16.100*	8.200	16.100*	14.300*	6.300	14.300*	11.500	5.000	12.800*				
8	23.800*	16.400	23.800*	23.700*	10.300	23.700*	18.500*	7.600	18.500*	14.100	6.000	15.300*	113.00	4.800	13.700*	8.000	3.300	8.100*	
0	31.600*	13.500	31.600*	25.000	9.000	26.900*	17.600	6.800	21.400*	13.500	5.400	17.200	10.800	4.400	13.700				
-4	36.100*	13.100	36.100*	24.900	8.900	27.100*	17.400	6.700	21.600*	13.300	5.300	17.100	10.800	4.400	13.600				
-12	35.600*	13.900	35.600*	25.400*	9.400	25.400*	17.900	7.100	18.300*										

\* Table values are in accordance with ISO 10567 (75% of stability or 87% of hydraulic capacity). If lifting via the standard mounted lifting hook, allow for a maximum of 26500 lb. If lifting without quick hitch and directly in the outer hole in the slewing arm, values can be used by adding approx. 441 lb.





**MX18G : MAX LIFTING CAPACITY IN LB WITH CHASSIS A1, DIPPER 8'2". WEIGHT QUICK HITCH 441 LB. ISO 10567\***

		Reach in feet																		
		10			13			16			19			22			Max.			
H		AQ	F	AL	AQ	F	AL	AQ	F	AL	AQ	F	AL	AQ	F	AL	AQ	F	AL	
24		13.600*	13.600*	13.600*	13.700	12.000	14.400*	9.700	8.500	14.800*	7.200	6.200	13.500*							
16		15.600*	15.600*	15.600*	12.600	10.900	16.800*	9.100	7.900	16.400*	6.800	5.900	13.900*	5.300	4.600	12.600*				
12		17.900	15.200	24.600*	11.400	9.800	22.400*	8.400	7.200	17.800*	6.400	5.500	14.800*	5.100	4.400	13.300*				
8		16.400	13.800	25.000*	10.400	8.800	24.200*	7.700	6.500	19.900*	6.000	5.100	16.100*	4.800	4.100	13.300	3.200	2.700	9.000	
0		13.900	11.500	31.200*	9.000	7.500	26.100*	6.800	5.700	20.800*	5.400	4.500	16.100	4.400	3.700	12.700				
-4		13.600	11.200	35.200*	9.000	7.400	26.400*	6.700	5.500	20.900*	5.300	4.400	16.000	4.300	3.600	12.600				
-12		14.600	12.100	36.500*	9.600	8.000	26.900*	7.000	5.900	19.800*	5.700	4.800	13.700*							

**MX20G : MAX LIFTING CAPACITY IN LB WITH CHASSIS A3, DIPPER 8'2". WEIGHT QUICK HITCH 441 LB. ISO 10567\***

		Reach in feet																		
		10			13			16			19			22			Max.			
H		AQ	F	AL	AQ	F	AL	AQ	F	AL	AQ	F	AL	AQ	F	AL	AQ	F	AL	
24		21.980*	21.980*	21.980*	22.636*	18.371	22.636*	22.308*	12.794	22.308*										
16		18.371*	18.371*	18.371*	21.324*	18.043	21.324*	22.308*	12.466	22.308*	16.731	9.186	19.684*	12.794	6.889	18.043*				
12		33.790*	25.589	33.790*	31.166	15.747	31.494*	21.324	11.154	24.933*	16.075	8.530	20.996*	12.446	39.367	19.027				
8		38.383*	21.980	38.383*	28.213	13.450	37.071*	19.684	9.842	29.525*	15.091	7.545	23.620*	11.810	5.905	18.699	8.530	4.265	12.794*	
0		45.272	18.699	47.241*	26.245	11.810	38.383*	18.699	8.858	30.182*	14.107	6.889	22.964	11.482	5.577	18.043				
-4		45.272	18.699	54.130*	26.245	11.810	39.039*	18.371	8.530	30.510*	14.107	6.889	22.636	11.482	5.577	18.043				
-12		47.241	20.012	53.146*	27.557	13.122	36.743*	19.356	9.514	25.917*										

**MX18G : MAX LIFTING CAPACITY IN LB WITH CHASSIS 2XA1, DIPPER 8'2". WEIGHT QUICK HITCH 441 LB. ISO 10567\***

		Reach in feet																		
		10			13			16			19			22			Max.			
H		AQ	F	AL	AQ	F	AL	AQ	F	AL	AQ	F	AL	AQ	F	AL	AQ	F	AL	
24		13.600*	13.600*	13.600*	14.400*	12.500	14.400*	12.300	8.800	14.800*	9.200	6.500	13.500*							
16		15.600*	15.600*	15.600*	16.300	11.400	16.800*	11.700	8.200	16.400*	8.900	6.200	13.900*	7.000	4.900	12.600*				
12		24.100	15.900	24.600*	15.100	10.300	22.400*	11.000	7.600	17.800*	8.400	5.800	14.800*	6.700	4.600	13.300*				
8		22.300	14.500	25.000*	14.000	9.300	24.200*	10.200	6.900	19.900*	8.000	5.400	16.100*	6.400	4.300	14.000*	4.400	2.900	9.900*	
0		19.600	12.100	31.200*	12.500	8.000	26.100*	9.300	6.000	20.800*	7.300	4.800	17.200*	6.000	3.900	14.300				
-4		19.300	11.900	35.200*	12.500	7.900	26.400*	9.200	5.900	20.900*	7.200	4.700	17.300*	5.900	3.800	14.200				
-12		20.400	12.800	36.500*	13.100	8.500	26.900*	9.600	6.300	19.800*	7.600	5.100	13.700*							

**MX18G : MAX LIFTING CAPACITY IN LB WITH CHASSIS A3, DIPPER 8'2". WEIGHT QUICK HITCH 441 LB. ISO 10567\***

		Reach in feet																		
		10			13			16			19			22			Max.			
H		AQ	F	AL	AQ	F	AL	AQ	F	AL	AQ	F	AL	AQ	F	AL	AQ	F	AL	
24		13.600*	13.600*	13.600*	14.400*	12.600	14.400*	14.800*	8.900	14.800*	12.100	6.600	13.500*							
16		15.600*	15.600*	15.600*	16.800*	11.500	16.800*	15.600	8.300	16.400*	11.700	6.300	13.900*	9.200	4.900	12.600*				
12		24.600*	16.100	24.600*	20.800	10.400	22.400*	14.800	7.700	17.800*	11.300	5.900	14.800*	9.000	4.700	13.300*				
8		25.000*	14.600	25.000*	19.600	9.400	24.200*	14.000	7.000	19.900*	10.800	5.500	16.100*	8.700	4.400	13.500	6.000	2.900	9.200	
0		29.600	12.300	31.200*	17.900	8.100	26.100*	13.000	6.100	20.800*	10.100	4.900	16.300	8.200	4.000	13.000				
-4		29.200	12.000	35.200*	17.900	8.000	26.400*	12.800	6.000	20.900*	10.000	4.800	16.200	8.100	3.900	12.900				
-12		30.400	12.900	36.500*	18.600	8.600	26.900*	13.300	6.400	19.800*	10.400	5.200	13.700*							

**MX18G : MAX LIFTING CAPACITY IN LB WITH CHASSIS A4, DIPPER 8'2". WEIGHT QUICK HITCH 441 LB. ISO 10567\***

		Reach in feet																		
		10			13			16			19			22			Max.			
H		AQ	F	AL	AQ	F	AL	AQ	F	AL	AQ	F	AL	AQ	F	AL	AQ	F	AL	
24		13.600*	13.600*	13.600*	14.400*	12.700	14.400*	14.800*	9.000	14.800*	13.500*	6.700	13.500*							
16		15.600*	15.600*	15.600*	16.800*	11.600	16.800*	16.400*	8.400	16.400*	13.900*	6.400	13.900*	11.600	5.000	12.600*				
12		24.600*	16.300	24.600*	22.400*	10.500	22.400*	17.800*	7.800	17.800*	14.300	6.000	14.800*	11.300	4.700	13.300*				
8		25.000*	14.800	25.000*	24.200*	9.500	24.200*	18.100	7.100	19.900*	13.700	5.600	16.100*	10.900	4.500	13.800	7.500	3.000	9.500	
0		31.200*	12.500	31.200*	24.100	8.200	26.100*	16.900	6.200	20.800*	13.000	4.900	16.700	10.400	4.000	13.300				
-4		35.200*	12.200	35.200*	24.100	8.100	26.400*	16.800	6.100	20.900*	12.900	4.800	16.600	10.400	4.000	13.200				
-12		36.500*	13.100	36.500*	24.900	8.800	26.900*	17.300	6.500	19.800*	13.300	5.200	13.700*							



\* Table values are in accordance with ISO 10567 (75% of stability or 87% of hydraulic capacity). If lifting via the standard mounted lifting hook, allow for a maximum of 26500 lb. If lifting without quick hitch and directly in the outer hole in the slewing arm, values can be used by adding approx. 441 lb.

\* Table values are in accordance with ISO 10567 (75% of stability or 87% of hydraulic capacity). If lifting via the standard mounted lifting hook, allow for a maximum of 26500 lb. If lifting without quick hitch and directly in the outer hole in the slewing arm, values can be used by adding approx. 441 lb.





# Rail Excavators - built for the tracks.

**The MX Rail excavator range is based on Hydrema's standard machines and factory build for work on railways.**

Equipped with Hydrema's flexible rail system, the MX RAIL excavators can work in both high and low rail mode.

**High rail mode**

The tires are fully pressed against the rail wheels and lifted 3.9 inches above the tracks. Damage to track sensors and track shifters is avoided, as the tires are lifted entirely off the railway tracks. Operating in high rail mode provides maximum stability.

**Low rail mode**

The tires run directly upon the railway tracks. The rail wheels run with constant pressure control and suspension to achieve high safety and avoid derailing. This provides comfortable driving and maximizes traction. It is especially handy in wet conditions.

**Safety**

For maximum safety, the rail machines are fitted with the electronic Prolec height and slew limiting system with RCI (Rated Capa-

city Indicator). The system has fail-safe functionality with automatic checks and double sensors.

The system functions as a safeguard from hitting overhanging railway cables and make a virtual wall to prevent movement into the neighbouring track. Meanwhile the RCI constantly monitors the stability of the machine.

The machine comes with 3 cameras as standard (2 rearwards on the counterweight and 1 on the right-hand side).

**Hydrema MX Rail models**

The compact uppercarriage on MX16G RAIL enables work on double-track railways without disturbing the traffic on the other track.

The MX20G Rail is designed for heavy lifting and is the most compact rail excavator in the +22 Tonne segment.



**Rail Specific Equipment**

Undercarriage with a rail system, for standard-gauge railway (track width: 56.5 in) capable of working in both high and low rail mode.

The machine's driveline is used for propulsion, also in rail mode. Visual control of pressure in cylinders for the rail modules. Electronic monitoring of high and low rail mode with alarm.

Rail wheels diameter: 25.6 in. Lockable oscillation (+/- 3°) of the rail wheel axle on the front rail module. Individual disc brakes on rail wheels, operated both by the service and parking brake. Hydraulic lock of steering wheels when operating in rail mode.

Fixed BM-hitch on the rear rail module, for mounting of tools.

An extra hydraulic circuit (13.2 gal) for external tools, mounted on the rear of the undercarriage.

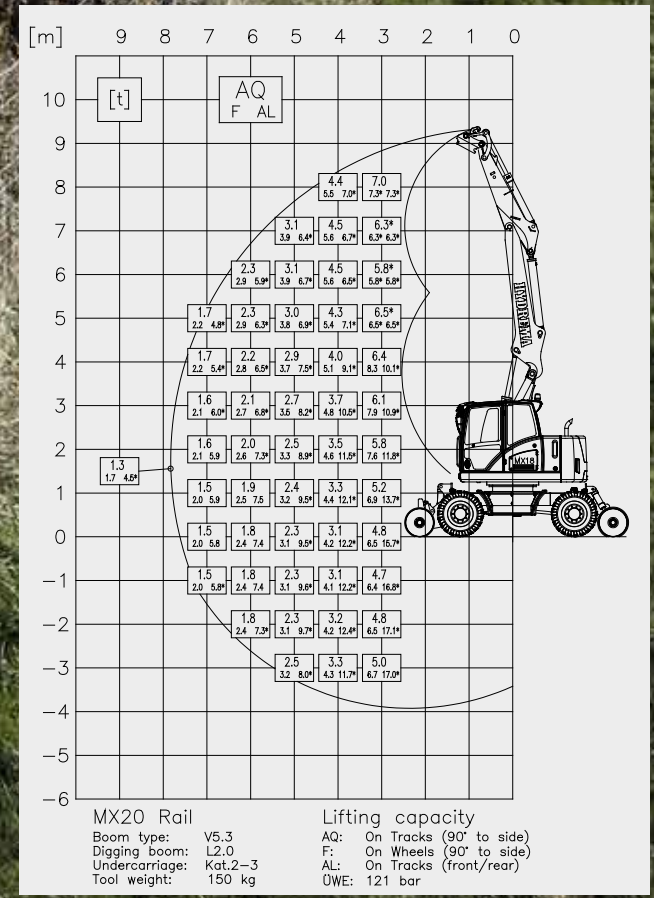
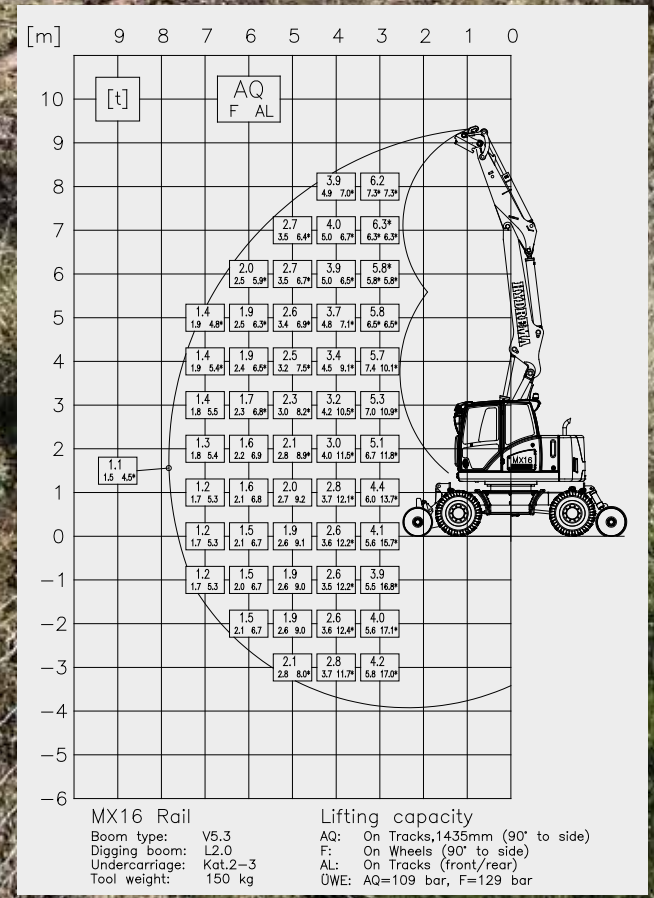
Coupling for a trailer, front/rear. 7-pole socket for trailer, rear. An Airbrake system for trailers is available as an option.

Hydraulic emergency operation. Stop buttons are placed both outside and inside the cab.

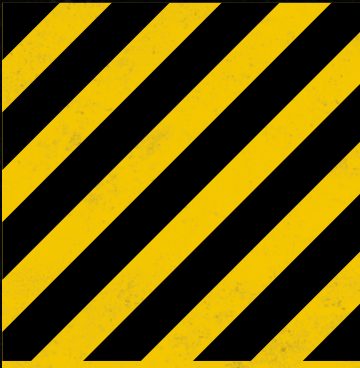
Specifications		MX16G RAIL	MX20G RAIL
Machine weight*	lb	42770	45195
Width over standard tires	ft in	8'5"	8'5"
Clearance height, cab, on rails (high rail)	ft in	10'6"	10'6"
Ground clearance (rail work; high rail mode)	ft in	4"	4"
Rear distance, pivot center to counter weight	ft in	5'5"	5'7"
Slew radius, rear	ft in	5'11"	6'
Reach, with 6'7" dipper	ft in	28'11"	28'11"
Breakout force, bucket**	lbf	28326	28326

\*) Weight stated with 441 lb quick hitch and 882 lb bucket \*\*\*) with direct-mounted bucket









**HYDREMA US INC.**  
Call +1 404 614 1747

**MORE INFO**  
[www.hydrema.us](http://www.hydrema.us)

 **HYDREMA**