

# Hydrema MX RAIL LIFT.



Purpose-build, detachable crane with man basket for railway construction and maintenance. Can be mounted on the Hydrema range of MX RAIL excavators.

## Key features

- Designed to work on the railway incl. height and slew limitation system.
- 3 hydraulic extensions offer a maximum reach with the man basket of 12,2 m.
- Heavy-duty slewing system that is able to hold the lift in position even on sloping tracks.
- Able to move along the tracks while standing in the man basket (up to 3 km/h).

# Technical data

## Equipment

### Lift console:

- The lift and its console is mounted on the rear rail module on Hydrema MX RAIL excavators and is detachable.
- In order to easily attach and detach the lift console, there are quick couplings for the hydraulic and electric connections as well as adjustable stabilizers can be mounted during storage.
- The crane is mounted on the left hand side on the crane console to provide maximum utilization of both the crane and excavator.

### Crane:

- 3 hydraulic extensions for a total of 5,6 m.
- The crane can automatically return to its transport position.

### Rail specific equipment:

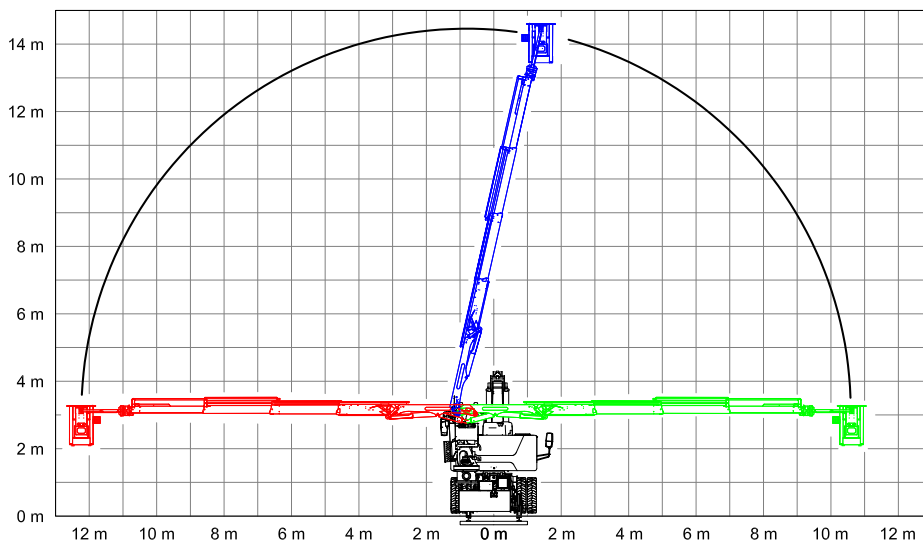
- The lift is designed to work on the railway with a height and slew limitation system (according to EN 1403).
- Mounted with a heavy-duty slewing system consisting of swing bearing and hydraulic swing motor, which is able to hold the lift even on sloping tracks (up to 180 mm. difference in track height).
- It is possible to make the excavator move along the rail tracks up to 3 km/h while standing in the man basket (via the remote control).
- Earth bounding of all components for maximum safety.
- Check of transport position with alarm in cab.

### Man basket:

- The man basket has an integrated toolbox.
- Electrohydraulic leveling.
- The man basket is electric insulated.
- Emergency stop and electric emergency lowering of the man basket.
- The man basket is connected via a quick hitch onto the crane.
- Brackets are mounted on the lift console for easy storage of the man basket during transport.
- Wireless remote control unit for all lift functions with LCD display.

### Certifications:

- Certified in accordance with the European standard for mobile elevating work platforms: EN 280.2015.
- The crane (without man basket) is approved according to EN 12999, and can hereby be used as a stand-alone-crane for lifting purposes.



## Specifications

Max. working height	m	14,0
Max. reach (with man basket) *	m	12,2
Max. load in man basket	kg	200
Max. reach, crane	m	9,9
Max load, crane	kg	700
Max. slewing angle	°	450
Max. slewing torque	kNm	11,80
Max. lifting moment	mt	7,90
Weight	kg	2400
1 LED working light on outer boom		

\* 2 persons + tools or max. 200 kg



Transport position